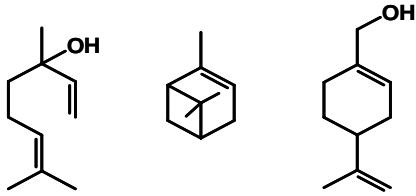


# MONOTERPENOIDS

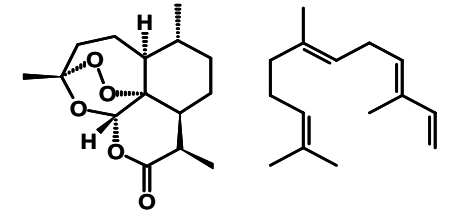
# SESQUITERPENOIDS



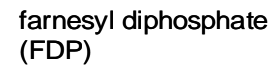
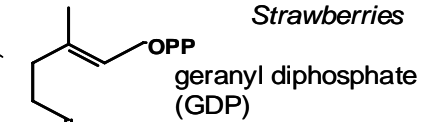
Strawberries



Anti-malarial drug



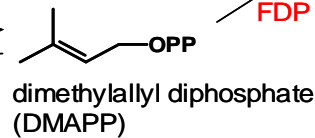
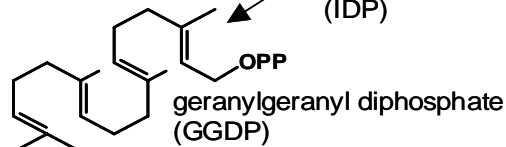
monoterpene synthases +/-  
modifying enzymes



sesquiterpene synthases +/-  
modifying enzymes

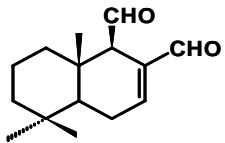
GDP synthase

GGDP synthase



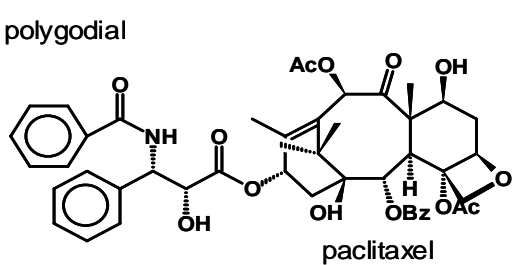
squalene synthase  
squalene epoxidase

diterpene synthases +/-  
modifying enzymes



squalene-2,3-epoxide

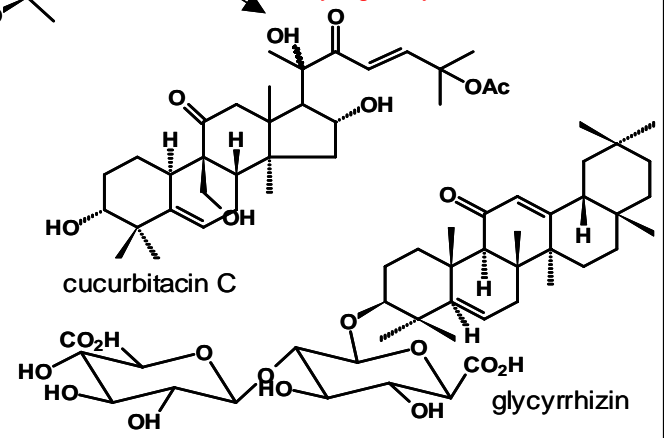
triterpene synthases +/-  
modifying enzymes



*Myzus persicae*



Leaf of cucumber



# DITERPENOIDS

# TRITERPENOIDS