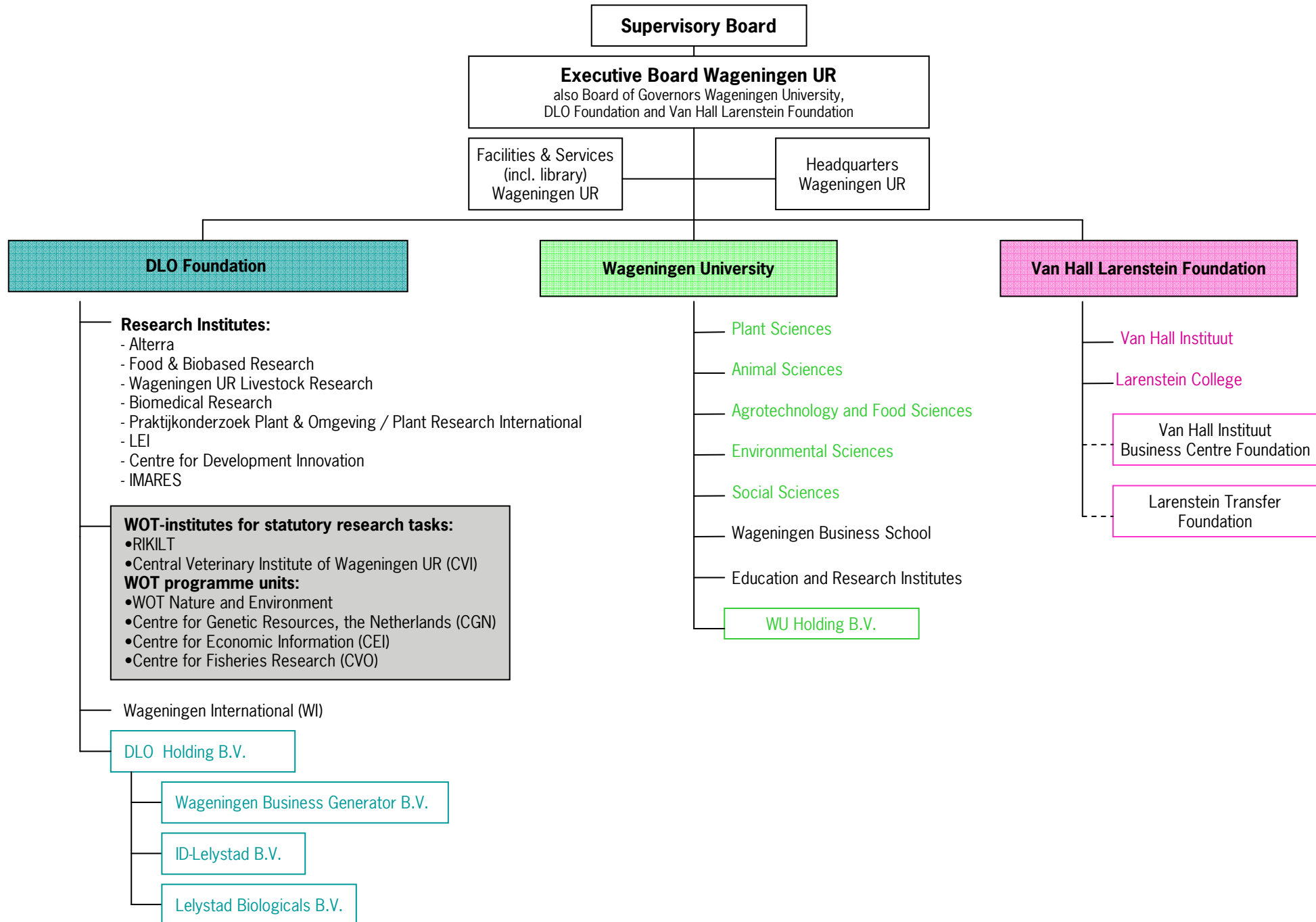
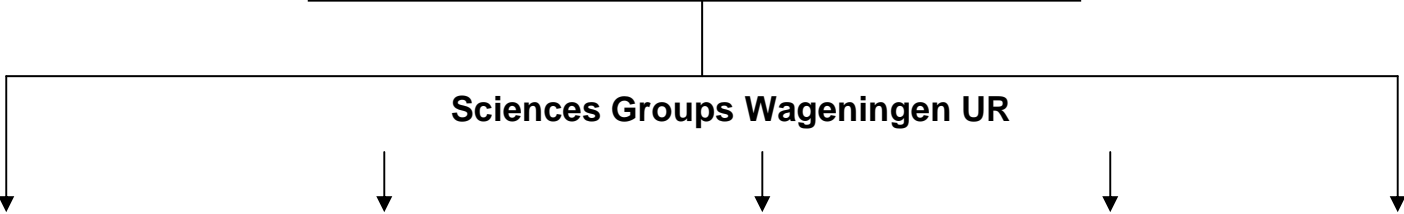


Legal- and Organisation Chart Wageningen University & Research Centre



Executive Board Wageningen UR
 Also Board of Governors:
 Wageningen University, DLO Foundation en Van Hall Larenstein Foundation



Sciences Groups Wageningen UR

	Plant Sciences Group	Animal Sciences Group	Agrotechnology & Food Sciences Group	Environmental Sciences Group	Social Sciences Group	
Wageningen University	- Plant Sciences	- Animal Sciences	- Agrotechnology and Food Sciences	- Environmental Sciences	- Social Sciences	- WU Holding B.V.
DLO Foundation	- Applied Plant Research / Plant Research International	- Wageningen UR Livestock Research - Biomedical Research	- Food & Biobased Research	- Alterra	- LEI - Centre for Development Innovation	- IMARES - DLO Holding B.V.

Register of shareholders, participations and spin offs

DLO Foundation	→	100%	participation in:	- DLO Holding B.V.
DLO Holding B.V.	→	100%	participation in:	- Wageningen Business Generator B.V.
		100%	participation in:	- ID-Lelystad B.V.
		100%	participation in:	- Lelystad Biologicals B.V.
Wageningen Business Generator B.V.	→	100%	participation in:	- Exploitiemaatschappij Windmolenparken Lelystad (EWL) B.V.
		100%	participation in:	- Windmolenpark Mammoethoofd B.V.
		100%	participation in:	- Windmolenpark Neushoorntocht B.V.
		56%	participation in:	- Calendula Oil B.V.
		30,4%	participation in:	- Nsure Holding B.V.
		32,81%	participation in:	- Pepsican Holding N.V.
		25%	participation in:	- Covaccine B.V.
		9,6%	participation in:	- Lactive B.V.
		4,39%	participation in:	- Telemetronis Biometry B.V.
		1,59%	participation in:	- Prionics AG
		2,38%	participation in:	- Dutch Greentech Fund B.V.
		100%	participation in:	- Agri New Ventures B.V.
				→ - 50% partner in: V.O.F. Oostwaardhoeve (VOF OWH)
				→ VOF OWH 66% partner in Bollenmeer V.O.F.
		50%	participation in:	- Oostwaardhoeve Beheer B.V.
		40%	participation in:	- Knowhouse B.V. (certificates)
		49%	participation in:	- Fresh Forward Holding B.V.
				→ - 100% participation in Fresh Forward Breeding B.V.
				→ - 100% participation in Fresh Forward Marketing B.V.
		5%	participation in:	- Isolife B.V.
Wageningen University	→	100%	participation in:	- Wageningen Universiteit Holding B.V.
WU Holding B.V.	→	51%	participation in:	- CAN-iT B.V.
		51%	participation in:	- Bio-Product B.V.
		100%	participation in:	- Nexus Holding B.V.
		34,5%	participation in:	- Ceradis B.V.
		33,32%	participation in:	- Biqualy B.V.
		11,4%	participation in:	- Green Dino B.V.
		2,44%	participation in:	- KLV Professional Match B.V.
				- Restaurant van de Toekomst Foundation
				- Proyecto Resistancia Duradera en la Zona Andina Foundation(Preduza)
Van Hall Larenstein Foundation	→			- Van Hall Instituut Business Centre Foundation
				- Larenstein Transfer Foundation